



SAR Technology Inc.

<http://sartechnology.ca>

sartechnology@telus.net



Searchlight Image Locator

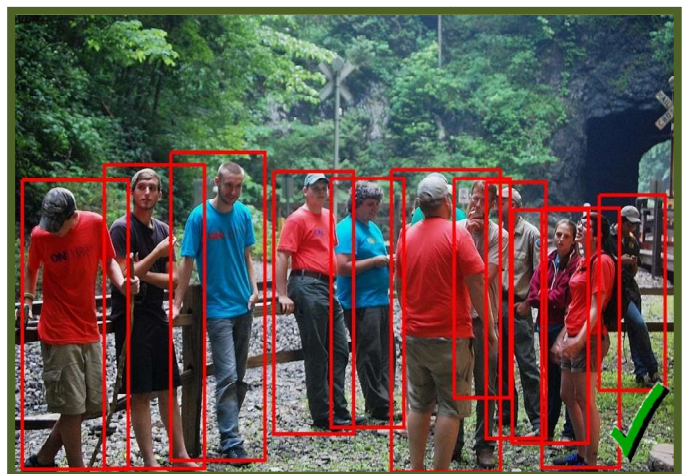
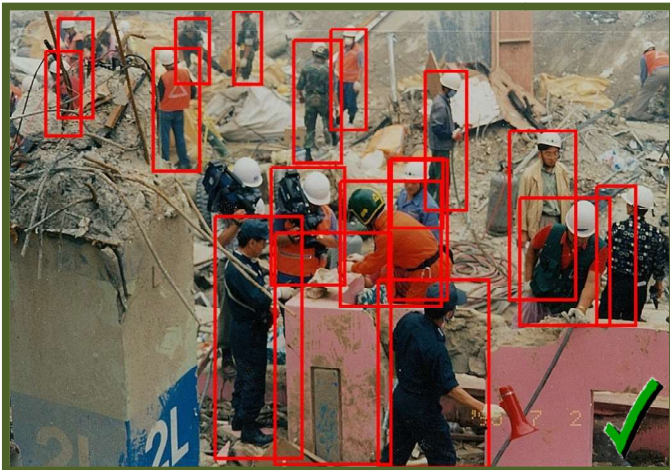
Crowd Counting with 'Searchlight Image Locator' - Counting Guidelines -

1. Recommended Image Style



1. Images should be taken close-up to the scene:

- typically in-person or from a low-height or a close-up drone just above the scene e.g.:

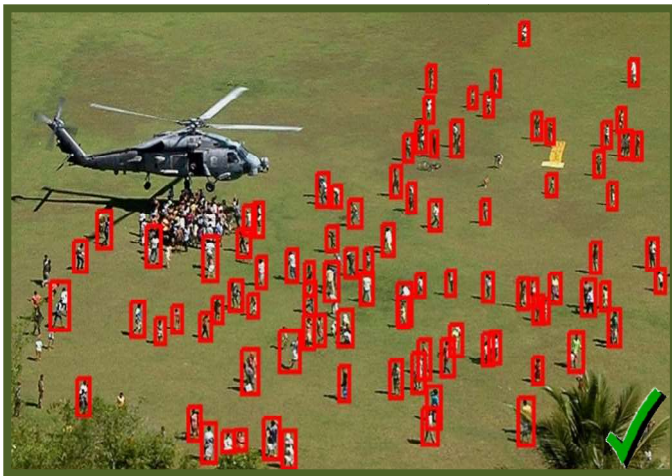


2. Generally avoid using medium-distance or higher-altitude aerial images:

- as some persons will appear too small and may not be detected (counted).



3. Medium-distance aerial images can be used (counted) if the background is reasonably uncluttered:



Searchlight Image Locator

2. Crowd Count Procedure using 'Searchlight Image Locator':

<https://www.sartechology.ca/sartechology/searchlight/Searchlight.html>

Step 1. Set 'Searchlight Image Locator' to Auto-Save the image Scan Report as a **PDF file**.



Step 2. Scan the full-size images taken using the **People [objects]** image category.

Step 3. View the Scan Report in a **PDF Viewer**.



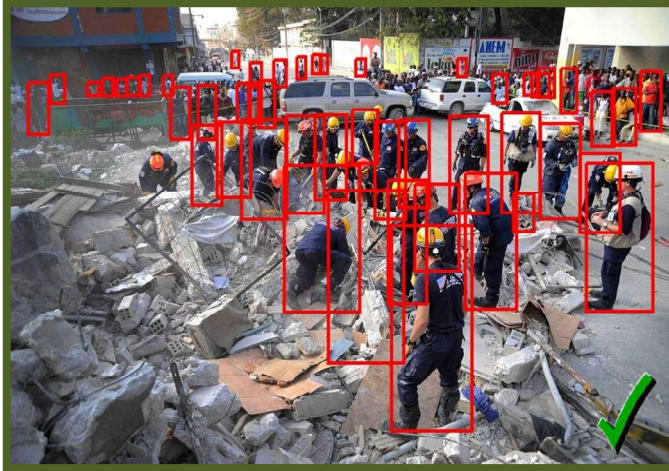
Step 4. **Text-Search** (advanced) **the PDF Editor for the exact word 'person'**.

The result displayed (e.g '301 person') will display the total number of 'person' finds within all of the images scanned in the Scan Report.

Step 5. **Add a Crowd Count Correction Factor of X 1.11 for more accurate results** in the close-up-images. e.g. 301 persons X 1.11 = 334 persons Total Crowd Count (corrected).

Note: If there is also an **uncounted dense background crowd**:

- apply the background-crowd Correction Factor **X 1.86** to the close-up-images instead:



e.g. 301 persons **X 1.86** = 560 persons Total Crowd Count (background-crowd corrected).
